



The Year in Review: 2015

January 2016

Water Resources Reliability and Sustainability in Yolo County

As drought conditions persist through 2015, Californians were tasked to conserve at new levels to lessen the burden on stressed water supplies. Californians met or exceeded the State's 25% conservation mandate, yet conservation efforts must continue during the fall and winter in order to reach the goal of 1.2 million acre-feet saved by February 2016. Unfortunately no one knows how much longer this historic drought will continue as hope springs eternal for a wet winter. Water managers, farmers and residents in Yolo County remain vigilant to implement actions for a new way of living with less water. The WRA Board of Directors focused on topics to inform, protect and sustain our region's surface water and groundwater supplies as evidenced by the list of 2015 presentations below.

For the first time in California history, legislation was enacted requiring local agen-

cies to manage their groundwater resources under the Sustainable Groundwater Management Act (SGMA). Many groundwater basins are being used unsustainably and SGMA regulations enforce changes that will help California cope with droughts. Better basin management through data collection, improved storage and aquifer recharge are a few solutions that could reform groundwater management.

As part of our local SGMA implementation process, the WRA and the Yolo County Farm Bureau have begun a facilitated outreach process to select a Groundwater Sustainability Agency (GSA) to implement SGMA's new and expanded management responsibilities. Yolo County is fortunate that many groundwater management elements have been established and utilized for 20 years, which benefits and supports our region's continued sustainability.

2015 Board Meeting Presentations and Topics



Yolo Bypass in Winter (Joy Elson, Yolo Basin Foundation)

- SGMA Legislation Implementation, DWR Facilitation Support Services Agreement, Groundwater Sustainability Agency Formation and Groundwater Basin Boundary Adjustments, Tim O'Halloran, Yolo County Flood Control & WCD
- City of West Sacramento's Flood Program Update, Eric Nagy, MBK Engineers
- Regional Water Authority's Legislative Priorities

Update, John Woodling, Regional Water Authority

- Rail Relocation Project, Tim Busch, City of Woodland
- Water Conditions Updates, Tim O'Halloran, Yolo County Flood Control & WCD
- Regional Flood Management Planning Update, (Lower Sacramento-Delta North) Cindy Tuttle, Yolo County
- Colusa County Well Permit Moratorium, Mary Fahey, Colusa County
- Aquifer Storage & Recovery Project, Tim Busch, City of Woodland
- Yolo Bypass Integrated Project Update, Robin Kulakow, Yolo Basin Foundation
- Updates from the WRA Technical Committee, and the Westside IRWMP
- Regular updates on legislative and regulatory issues

Davis, City of

Dunnigan Water District

Reclamation District 108

Reclamation District 2035

University of California, Davis

West Sacramento, City of

Winters, City of

Woodland, City of

Yolo County

Yolo County Flood Control & Water Conservation District

Water Resources Association
of Yolo County

P.O. Box 8624
Woodland, CA 95776

(530) 666-2733

www.yolowra.org

info@yolowra.org

WRA Funded IRWMP Projects and Programs in 2015

The WRA contributed funding toward the following project priorities in FY2014-15:

- *Yolo Bypass Integrated Action (\$10,000)*: The Yolo Basin Foundation (YBF) continues to serve as the facilitating entity for water resources projects and planning in the Yolo Bypass. YBF works in partnership with State and Federal partners to represent the local Delta-related interests and concerns. Local match \$5,000.
- *City of Winters Storm Water Management Planning (\$15,000)*: Funding to develop a comprehensive storm water management plan in accordance with municipal storm sewer system requirements. The City was not able to utilize these funds during FY14-15 and the allocation was extended into FY15-16. Then the City generously postponed use of these funds in FY15-16 so they could be used for the Yolo County Subsidence Network Monitoring

event planned for Spring 2016. The WRA will reserve funding in the FY16-17 budget for this City of Winters' project. Local match: \$12,000

- *The Year of Groundwater (\$62,500)*: Groundwater management is the primary focus of the WRA Technical committee with the passing of the State's 2014 Sustainable Groundwater Management Act (SGMA). These funds will be allocated to support SGMA implementation and other regional groundwater management activities as approved by the WRA Board. This new legislation is establishing a framework for regional groundwater sustainability and the formation of a Groundwater Sustainability Agency for Yolo County.
- *Westside IRWMP (\$20,000)*: The WRA is a regional partner in the Westside IRWMP. Napa, Lake and Solano counties also contribute \$60,000 in matching funds for Plan implementation.

(2015 Projects and Programs continued on back page)

Financial Summary

July 2014 - June 2015 Income

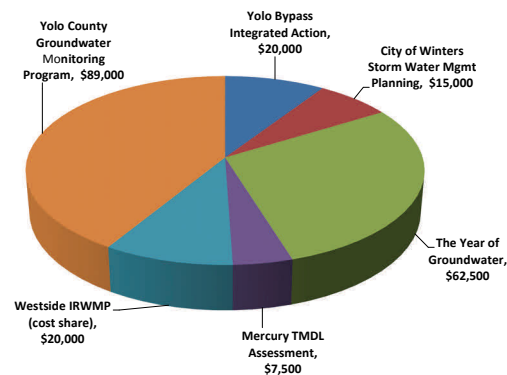
WRA Membership Dues: Baseline Budget

- Administrative Fund: \$85,074
- Project Fund: \$98,541

Special Projects Budget (Supplemental Income)

- Yolo County Groundwater Monitoring Program: \$89,000

July 2014 - June 2015 Budgeted Project Expenses



Grant/Loan Funding WRA Member Agencies (selected list)

Agency	Project	Funding Source	Amount	Status
Reclamation District 2035	RD2035 & WDCWA Joint Intake/Fish Screen	Prop. 1, Restoration Grants Program, CA Dept. Fish & Wildlife; Prop.1, Ecosystem Restoration & Water Quality, Delta Conservancy	\$8.1 million \$2 million	Submitted Submitted
Reclamation District 108	Knights Landing Ridge Drainage Ditch Levee Repair	DWR (\$6.4M) and Knights Landing Ridge Drainage District	\$7.5 million	Scheduled completion Nov. 2015
Westside -Sacramento IRWMP	Yolo County (2 projects, city of Woodland & YCFCWCD); Lake County (3 projects)	DWR 2014 Emergency Drought Grant	\$7 million	Awarded
City of Woodland	Lower Cache Creek Flood Feasibility Study and Design	DWR's Urban Flood Risk Reduction Program	\$5 million	Awarded
Westside -Sacramento IRWMP	Brownfields Coalition Assessment, Cache and Putah Creek Watersheds	US Environmental Protection Agency	~\$500,000	Awarded
Water Resources Assoc. of Yolo County & Yolo County Farm Bureau	CA Dept. of Water Resources, Center for Collaborative Policy	SGMA Implementation In-Kind Local Assistance for Facilitated Education & Public Outreach for GSA Formation	~\$55,000 (DWR); ~\$30,000 (WRA)	Awarded; WRA FY15-16 project funds allocation

IRWMP Integrated Projects & Ongoing Member Agency Activities

Highlighted in this section are selected projects and activities by WRA member agencies in 2015.

GROUNDWATER MANAGEMENT and SUBSIDENCE MONITORING

The WRA's "Year of Groundwater" was organized in response to the State's 2014 Sustainable Groundwater Management Act (SGMA) legislation. The intent of SGMA is to provide local agencies the authority, technical tools and financial assistance to sustainably manage groundwater resources. To that end, DWR is providing the WRA facilitation support services from the Center for Collaborative Policy to identify and form a Groundwater Sustainability Agency (GSA) through a public outreach process. Public meetings will begin in early 2016 with a six month process envisioned. The WRA will contribute a portion of the "Year of Groundwater" project funds toward SGMA implementation efforts. A Groundwater Sustainability Plan must be developed by the GSA by 1/31/20.

Agencies in Yolo County have a long history of managing our groundwater basin through the Groundwater and Subsidence Monitoring Programs, IGSM modeling and over a decade of data collection through the Water Resources Information Database (WRID). The WRA and participating member agencies are funding another subsidence network monitoring event in spring 2016. This information will be important for basin management after ongoing drought conditions.

WESTSIDE-SACRAMENTO IRWMP

The Westside continues implementation successes with 3 grant awards for its partnership. The IRWM Emergency Drought Grant Solicitation (2014) for Yolo and Solano, IRWM implementation funding for Lake and Napa (2015) and an EPA Brownfield grant for mercury contamination assessment (2015).



City of Woodland, Aquifer Storage & Recovery Project, Well #28

AQUIFER STORAGE & RECOVERY (ASR)

The City of Woodland's primary water supply is provided from 19 wells that are facing stricter water quality regulations that is making it harder for the wastewater

treatment plant to maintain compliance with State standards. The City has been working with West Yost Associates for several years to plan the ASR program in conjunction with the surface water supply project. With the completion of this project, all wells will be turned off and converted to surface water sources. The ASR program will balance the City's winter and summer water supply demands by storing injected surface water into the aquifer for later extraction. Testing has determined there is a 98% recovery rate of this injected water. One ASR Well is operational and two more should be completed by the end of 2016 with a few additional wells planned for future years.

WOODLAND-DAVIS REGIONAL WATER SUPPLY PROJECT

The City of Woodland secured \$143 million in low-interest state revolving fund loans to help fund their share of the Water Supply Project and related improvements to their water distribution system. The City of Davis also received a low-interest loan for a little over \$10 million for their project share. These low-interest loans will cover about 98% of the regional water project's which will reduce costs for ratepayers. The Regional Water Treatment Facility reached a major milestone in September and October with the completion of all major pipeline installation. RD 2035's Joint Intake construction and Fish Screen installation are also on schedule. The Woodland-Davis Regional Water Supply Project facilities are planned to come online in summer 2016. For current information go to www.wdcwa.com.

DROUGHT CONDITIONS and WATER CONSERVATION

Governor Brown issued an Executive Order in November 2015 intensifying the State's drought response that called for additional actions to build on the existing response to continuing drought conditions. Emergency conservation regulations were extended through October 2016, if the drought persists through January. On going drought information and assistance programs can be found at: ca.gov/drought. Californians are reminded to continue conserving water while preparing for flooding throughout the winter season.

The cities of Woodland, Davis, Winters and West Sacramento offered workshops and tools to help residents and businesses conserve water at this critical time. Their conservation message was successfully by meeting or exceeding the mandated conservation goals. Woodland has saved over a billion gallons compared to 2013 usage. In November, Davis had a 32% use reduction exceeding the 28% state mandated target. In July, West Sacramento conserved over 42% compared to 2013. (continued on back page)



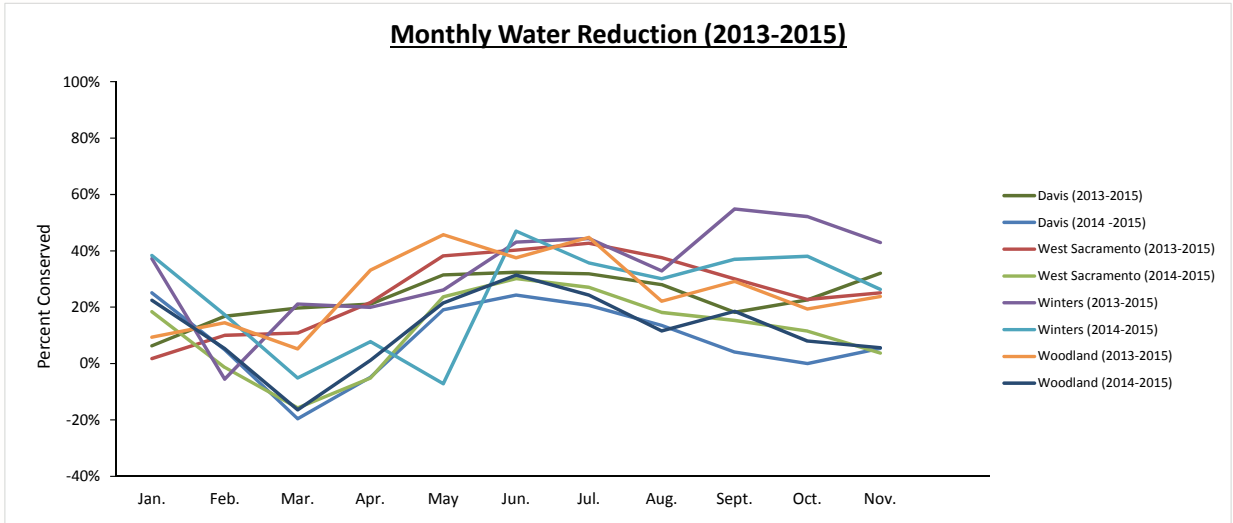
WATER RESOURCES ASSOCIATION

O F Y O L O C O U N T Y

Water Conservation in Yolo County

Davis, City of
 Dunnigan Water District
 Reclamation District 108
 Reclamation District 2035
 University of California, Davis
 West Sacramento, City of
 Winters, City of
 Woodland, City of
 Yolo County
 Yolo County Flood Control & Water Conservation District

Monthly Water Reduction (2013-2015)



This graph illustrates the conservation efforts of all Yolo County cities for 2014 and 2015 compared to their 2013 usage. Please visit each city’s website for conservation tools and tips for decreasing water usage in 2016. (Special thanks to Casey Leibler, Yolo County Natural Resources Division, for preparation of this graph!)

WRA Funded Projects and Programs in 2015 (continued from page 2)

- **Mercury TMDL Impacts & Implementation Assessment (\$15,000), 50/50 cost share with City of Woodland:** McCord Environmental, Inc. (MEI) and the Mercury Subcommittee assess, monitor and inventory mercury TMDL-related activities. MEI provides regulatory consulting related to mercury regulations impacting Yolo County watersheds.
- **Yolo County Groundwater Monitoring Program (\$89,000):** WRA members contribute ongoing support for this IRWMP Foundational Action managed by the YCFC&WCD. Many plans, projects and stakeholders use this Program data for ongoing management of our groundwater resources. For more project information and reports, please go to: www.yolowra.org/projects.html

Board Profile and Meeting Information

The WRA is governed by a Board of Directors comprised of representatives appointed by each member agency. The WRA Technical Committee is composed of senior staff from each of the participating agencies. The WRA Executive Committee is comprised of the Association Chair, Vice-Chair, Treasurer and Technical Committee Chair and handles administrative and oversight functions for the association.

The WRA Board of Directors meet a minimum of five times per year on a Monday from 3-5 p.m. in Woodland. The Technical and Executive Committees meet on a monthly basis. Additional meetings of the Board and Committees are arranged on an as-needed basis depending on issues that require timely attention.

The public is invited to attend and participate at all WRA meetings. Meeting minutes and future meeting announcements are available on our website at www.yolowra.org.

2015 WRA Board of Directors & Officers



The WRA would like to acknowledge Sid England who retired in December 2015. Sid represented the University of California Davis on the WRA Board since its creation in 1994. He has been an integral part of water resources planning and management for Yolo County. His technical contributions and participation included the 1992 Yolo Water Plan Update, the 2007 Yolo County IRWMP and the 2013 Westside-Sacramento IRWMP. Sid provided valuable leadership and insight that guided the WRA’s development as a regional association. The WRA Board extends their sincere and grateful appreciation for his many years of dedication to the WRA. For a complete list of WRA Board Officers: www.yolowra.org/about_rosters.html.

Water Resources Association
 of Yolo County

P.O. Box 8624
 Woodland, CA 95776

(530) 666-2733

www.yolowra.org

info@yolowra.org